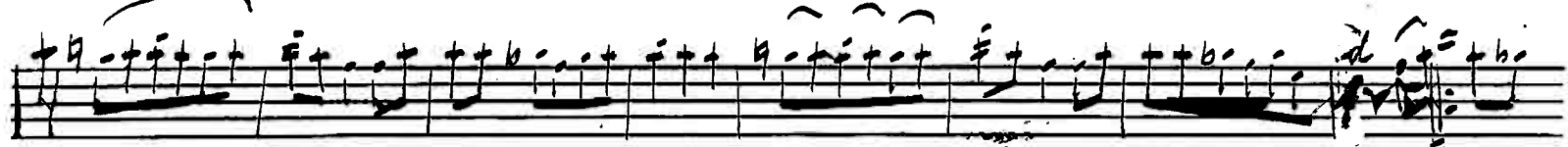


Violin 1. & 2.

Tyroler Vals!

25



Tyroliervalsen.

Handwritten musical score for Tyroliervalsen, page 3. The score consists of ten staves of music. The first staff is in treble clef with a sharp key signature and a 3/4 time signature. The second staff is in bass clef. The third staff is in treble clef. The fourth staff is in bass clef with a sharp key signature. The fifth staff is in treble clef with a sharp key signature. The sixth staff is in bass clef with a sharp key signature. The seventh staff is in treble clef with a sharp key signature. The eighth staff is in bass clef with a sharp key signature. The ninth staff is in treble clef with a sharp key signature. The tenth staff is in bass clef with a sharp key signature. The score includes various musical notations such as notes, rests, beams, slurs, and fingerings. There are also some handwritten annotations like 'w', '1', '2', '3', '4', '5', and 'D.C.'

Spela av N.E.R.

Tyrolean Vals.

A handwritten musical score for a piece titled "Tyrolean Vals." The score is written on seven staves. The first staff begins with a treble clef, a key signature of one sharp (F#), and a 3/4 time signature. The music is characterized by a rhythmic pattern of eighth and sixteenth notes, often beamed together. The second staff continues the melody and includes a first ending bracket labeled "I." The third staff features a first ending bracket labeled "I." and a second ending bracket labeled "II." The fourth staff contains a first ending bracket labeled "I." and a second ending bracket labeled "II." The fifth staff includes a first ending bracket labeled "I." and a second ending bracket labeled "II." The sixth and seventh staves conclude the piece with a final cadence. The notation includes various musical symbols such as clefs, key signatures, time signatures, and dynamic markings.

Tyroliener - Vals.

Handwritten musical score for 'Tyroliener - Vals.' in G major, 3/4 time. The score consists of seven staves. The first staff begins with a treble clef, a key signature of one sharp (F#), and a 3/4 time signature. The melody is characterized by eighth and sixteenth notes, with several triplet markings (indicated by a '3' below the notes) and a quintuplet (indicated by a '5' below the notes). The piece concludes with a double bar line and repeat dots.

6. 2.

Tyroliener - Vals.

Handwritten musical score for 'Tyroliener - Vals.' in G major, 3/4 time. The score consists of seven staves. The first staff begins with a treble clef, a key signature of one sharp (F#), and a 3/4 time signature. The melody is primarily composed of eighth and sixteenth notes. The piece concludes with a double bar line and repeat dots.