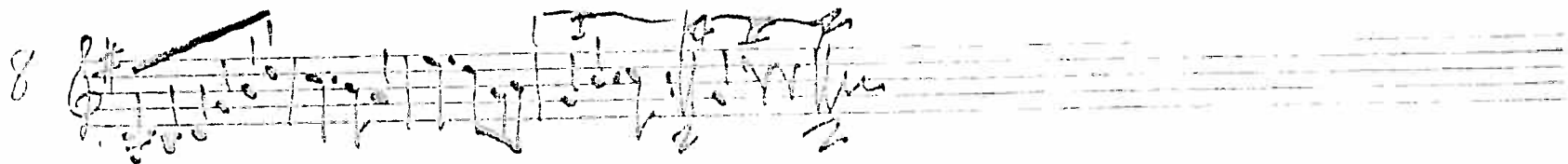
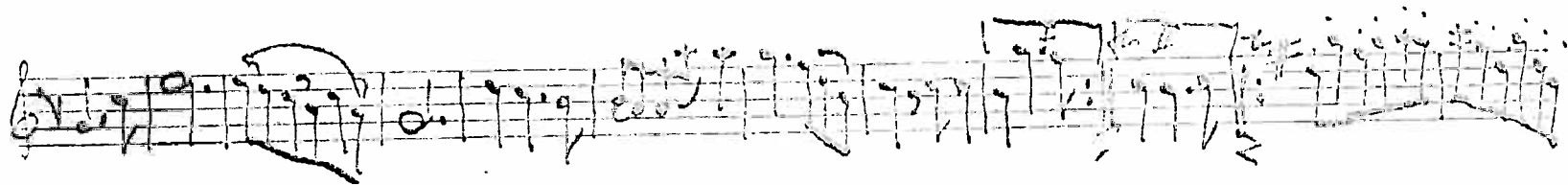
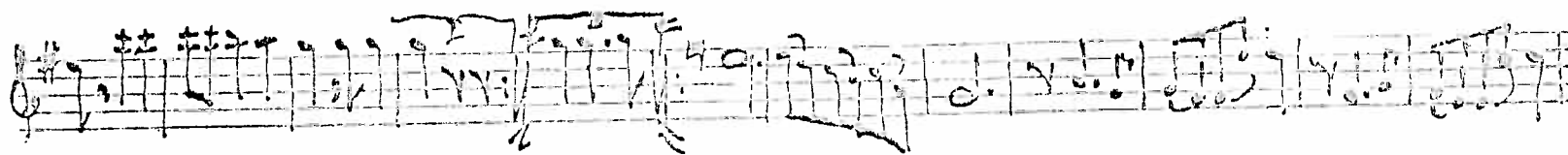
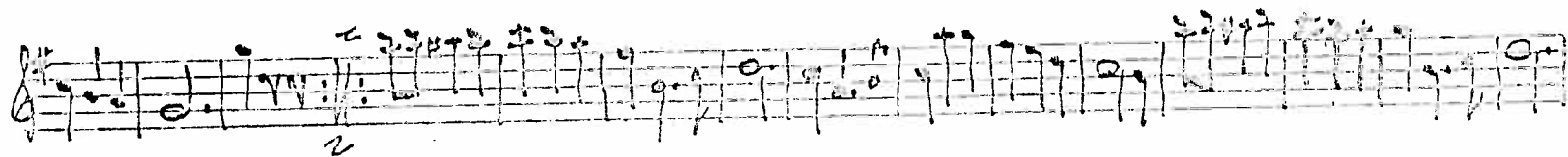


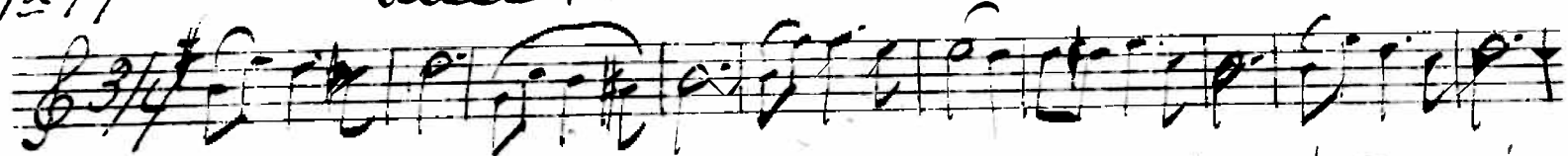
1ma Violin 110 Selsen til Hamar, Vals.



Hilsen til Hammer

Wals. mm-

No 19



This image shows a handwritten musical score consisting of four staves. The notation is written in black ink on a white background. The first staff begins with a treble clef and a key signature of one sharp (F#). It contains several measures of music, including a section with a wavy line above it and first, second, and third endings. The second staff continues the melody with various note values and rests. The third staff features a bass clef and contains more musical notation. The fourth staff concludes the piece with a final cadence and a signature that appears to be 'M. D. S.'. The handwriting is fluid and characteristic of a composer's draft.

No 14
Vals

Glisen til Blammer

