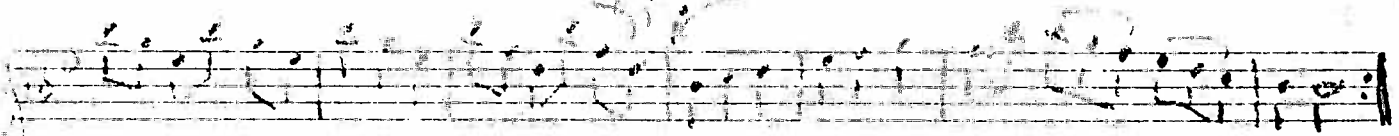
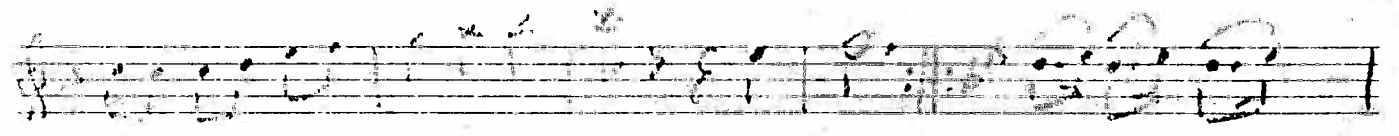
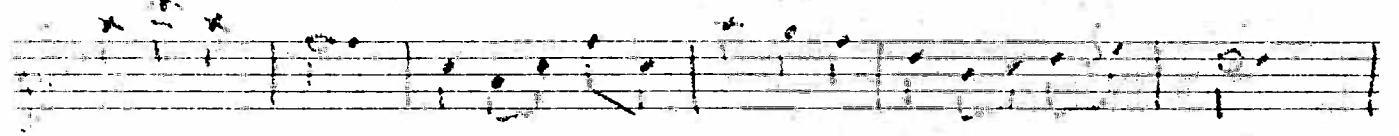
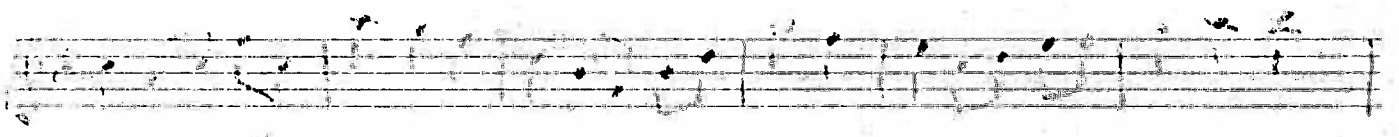
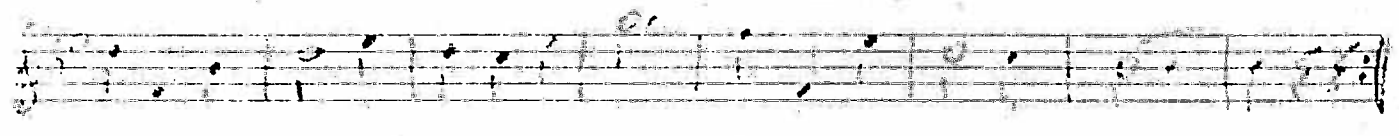
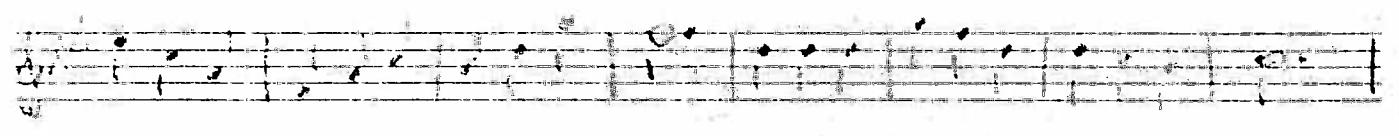
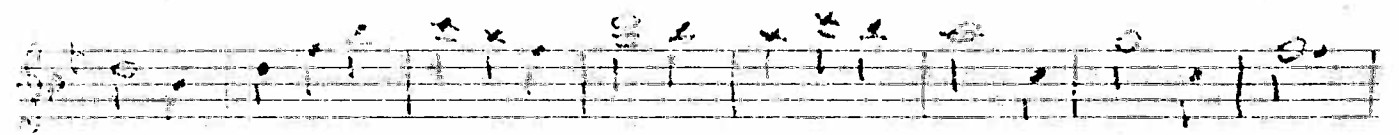
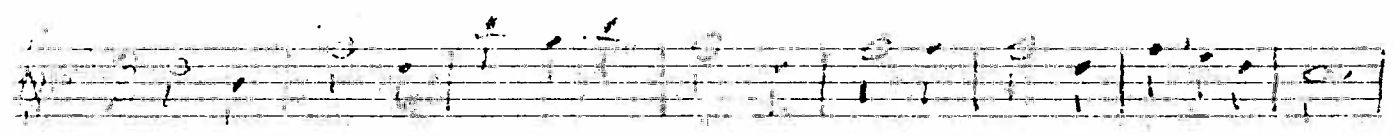
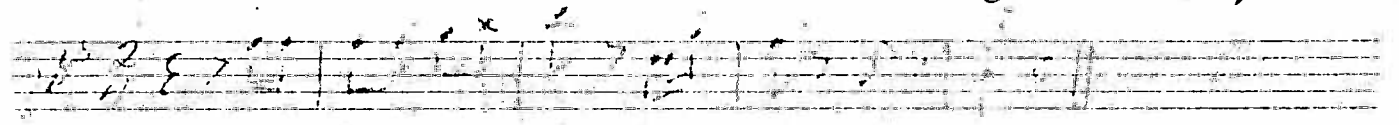


edle.

Sommarkveld på Björkarösta.

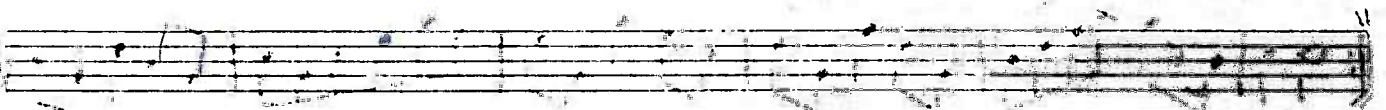
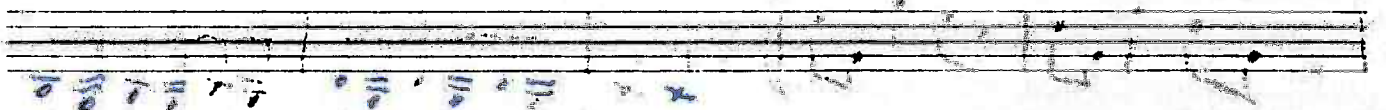
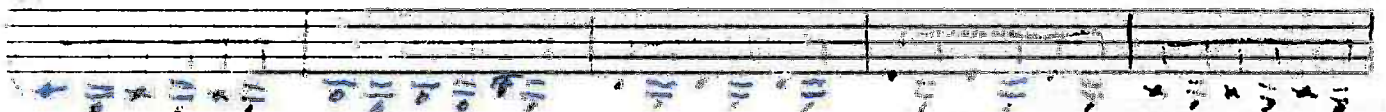
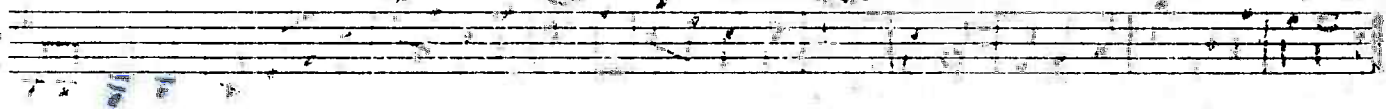
Olav P. Vennis



3. 1841. 1842

Linnétt

Sonnarkeveld på Björkarnasta.



Tonmarkaðurinn þinn, Jóhannann

Olav P. Uemir

The first system of handwritten musical notation consists of two staves. The upper staff is in treble clef and the lower in bass clef. The time signature is 3/4 and the key signature has two flats (B-flat and E-flat). The melody in the treble staff begins with a quarter rest, followed by a quarter note G4, a quarter note A4, a quarter note B-flat4, a quarter note C5, a quarter note B-flat4, a quarter note A4, a quarter note G4, and a quarter note F4. The bass staff provides accompaniment with chords and single notes.

The second system continues the piece. The treble staff features a melody of quarter notes: G4, A4, B-flat4, C5, B-flat4, A4, G4, F4, E4, D4, C4, B3, A3, G3, F3, E3, D3, C3. The bass staff continues with accompaniment.

The third system shows the melody in the treble staff with notes: G4, A4, B-flat4, C5, B-flat4, A4, G4, F4, E4, D4, C4, B3, A3, G3, F3, E3, D3, C3. The bass staff accompaniment continues.

The fourth system features a melodic line in the treble staff consisting of quarter notes: G4, A4, B-flat4, C5, B-flat4, A4, G4, F4, E4, D4, C4, B3, A3, G3, F3, E3, D3, C3. The bass staff accompaniment continues.

The fifth system concludes the piece. The treble staff melody consists of quarter notes: G4, A4, B-flat4, C5, B-flat4, A4, G4, F4, E4, D4, C4, B3, A3, G3, F3, E3, D3, C3. The bass staff accompaniment continues.

Handwritten musical notation for the first system. The treble staff contains a melody with a long note in the third measure. The bass staff provides a harmonic accompaniment with chords and single notes. The key signature is two flats (B-flat and E-flat), and the time signature is 4/4.

Handwritten musical notation for the second system. The treble staff continues the melodic line with eighth and sixteenth notes. The bass staff continues the accompaniment with chords and moving lines. The key signature and time signature remain consistent with the first system.

Handwritten musical notation for the third system. The treble staff features a more active melodic line. The bass staff continues to support the melody with chords and rhythmic patterns. The key signature and time signature are maintained.

Handwritten musical notation for the fourth system. The treble staff shows a change in time signature to 2/4 in the second measure. The bass staff continues with its accompaniment. The key signature remains two flats.

Handwritten musical notation for the fifth system. The treble staff concludes the melody with a final note. The bass staff provides a final accompaniment. The key signature and time signature are consistent with the previous systems.

Handwritten musical notation for the first system. The treble staff contains a melodic line with eighth and sixteenth notes, including a triplet of eighth notes in the final measure. The bass staff provides a harmonic accompaniment with chords and single notes.

Handwritten musical notation for the second system. The treble staff continues the melodic line with some longer note values. The bass staff continues the accompaniment with consistent rhythmic patterns.

*8 sukker påise*

Handwritten musical notation for the third system. A fermata is placed over a note in the treble staff. The bass staff continues with its accompaniment.

Handwritten musical notation for the fourth system. The treble staff shows a key signature change from two flats to one flat. The bass staff continues with its accompaniment.

Handwritten musical notation for the fifth system. The treble staff concludes the melodic line. The bass staff concludes the accompaniment.



The first system of handwritten musical notation consists of two staves. The top staff is in treble clef with a key signature of one flat (B-flat). It contains five measures of music: the first measure has a quarter note G4, a quarter note A4, and a quarter note B4; the second measure has a quarter note C5, a quarter note D5, and a quarter note E5; the third measure has a half note F5; the fourth measure has a half note G5; and the fifth measure has a half note A5. The bottom staff is in bass clef with a key signature of one flat. It contains five measures of music: the first measure has a quarter note G2, a quarter note A2, and a quarter note B2; the second measure has a quarter note C3, a quarter note D3, and a quarter note E3; the third measure has a quarter note F3, a quarter note G3, and a quarter note A3; the fourth measure has a quarter note B3, a quarter note C4, and a quarter note D4; the fifth measure has a quarter note E4, a quarter note F4, and a quarter note G4.

The second system of handwritten musical notation consists of two staves. The top staff is in treble clef with a key signature of one flat. It contains two measures of music: the first measure has a quarter note G4, a quarter note A4, and a quarter note B4; the second measure has a quarter note C5, a quarter note D5, and a quarter note E5. The bottom staff is in bass clef with a key signature of one flat. It contains two measures of music: the first measure has a quarter note G2, a quarter note A2, and a quarter note B2; the second measure has a quarter note C3, a quarter note D3, and a quarter note E3. The system ends with a double bar line.