

Flebe 1.

Nøls fra Korsdøl.

A handwritten musical score for a piece titled "Flebe 1. Nøls fra Korsdøl." The score is written on ten staves in G major (one sharp) and 3/4 time. The notation includes various rhythmic values such as eighth and sixteenth notes, rests, and slurs. Chord symbols (E, D7, C, G) are placed below the staves to indicate the harmonic structure. There are also some performance markings like accents (v) and dynamic markings (n). The piece concludes with a double bar line and repeat signs.

Fele 2.

Væls fra Romsdal.

3

First staff of music, treble clef, 3/4 time signature, key signature of one sharp (F#). It begins with a dynamic marking of *mf*. The notation includes a series of eighth notes and quarter notes, with some notes marked with accents (*v*) and slurs.

Second staff of music, treble clef, continuing the melody from the first staff. It features a mix of eighth and quarter notes.

Third staff of music, treble clef, showing a change in rhythm with some dotted notes and a first ending bracket labeled '1'.

Fourth staff of music, treble clef, featuring a more complex rhythmic pattern with many eighth notes and slurs.

Fifth staff of music, treble clef, continuing the intricate eighth-note patterns with various slurs and accents.

Sixth staff of music, treble clef, including a first ending bracket labeled '1' and a second ending bracket labeled '2'.

Seventh staff of music, treble clef, featuring a series of quarter notes with slurs.

Eighth staff of music, treble clef, showing a continuation of the quarter-note melody with slurs.

Ninth staff of music, treble clef, with a mix of quarter and eighth notes and slurs.

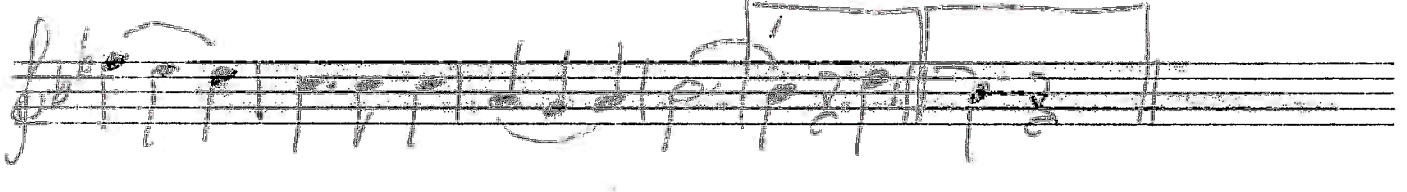
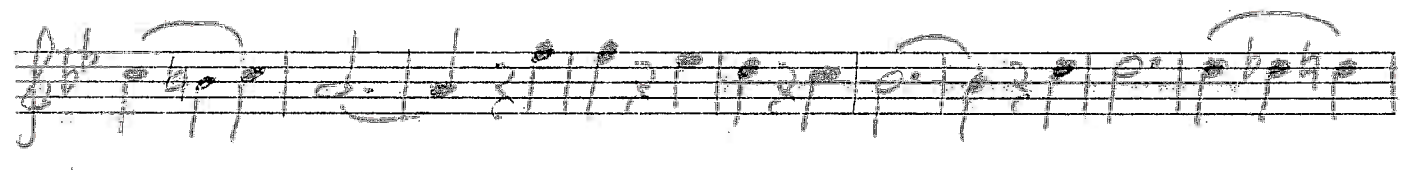
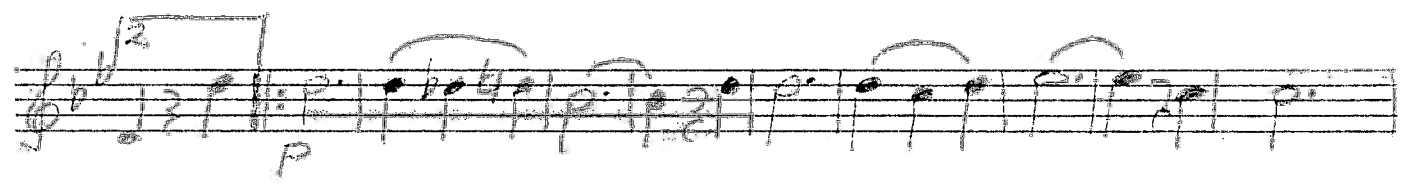
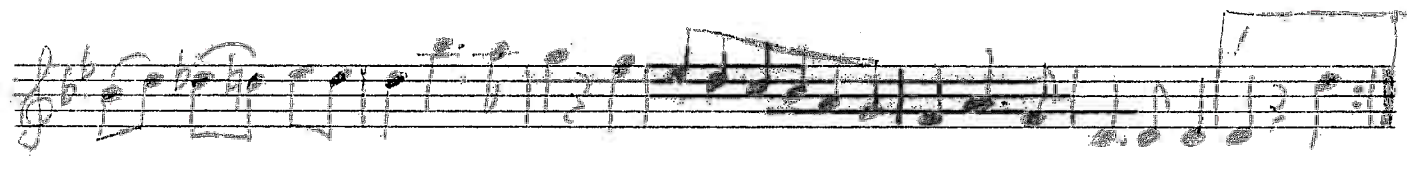
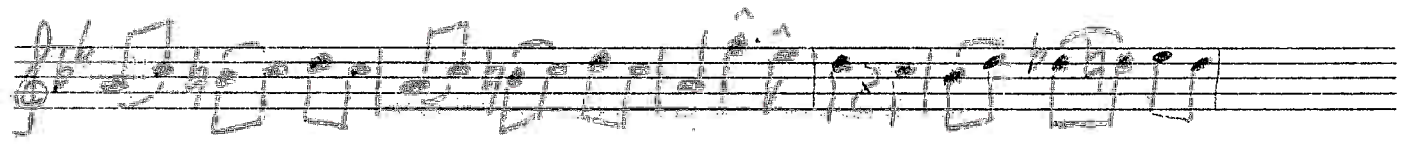
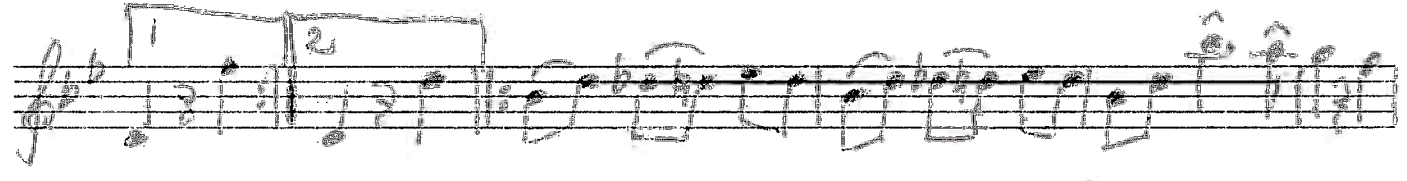
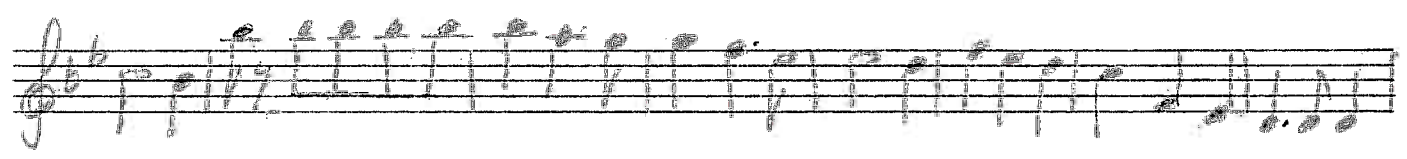
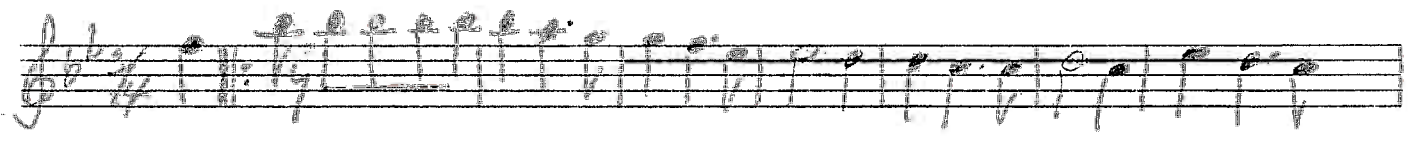
Tenth staff of music, treble clef, featuring a series of quarter notes with slurs.

Eleventh staff of music, treble clef, concluding the piece with a final cadence, including a dynamic marking of *mf* and a first ending bracket labeled '1'.

1. B-Klarinet

Vals fra Romsdal

The image shows a handwritten musical score for Clarinet B, titled "Vals fra Romsdal". The score is written on 11 staves. The key signature is G major (one sharp) and the time signature is 3/4. The music is written in a single melodic line. The notation includes various note values (quarter, eighth, and sixteenth notes), rests, slurs, and dynamic markings such as *mf* and *f*. There are also some handwritten annotations, including a large 'X' over a measure on the third staff and some corrections or additions in blue ink. The paper is aged and yellowed.







Vals für Hornsöckel

Violin I  
Violin II  
Klar. A  
Cello  
Piano

*mf* *cresc.*

Violin I  
Violin II  
Klar. A  
Cello  
Piano

*f* *p*

Violin I  
Violin II  
Klar. A  
Cello  
Piano

*cresc.* *mf*

-Forkioni

II

Violin I

Violin II

Klarinet A

Cello

Piano

*col. Violin*

*G D am D E G D7 G*

Violin I

Violin II

Klarinet A

Cello

Piano

*D am D7*