

9) SOMMERNATTEN I TROMSØ, VALS (59) *lettes jonn edvard Ringen*

This handwritten musical score is for the waltz "Sommeratten i Tromsø" by Lettes Jonn Edvard Ringen. The piece is in the key of D major and 3/4 time. The score is arranged for a piano (I, II, III), a violin (I, II), a viola (I, II), and a vocal line. The music is divided into measures numbered 1 through 24. Chord symbols such as G, D7, Am, and A7 are written above the piano and vocal staves. The notation includes various rhythmic values, accidentals, and articulation marks like accents and slurs. The score concludes with a double bar line and repeat dots at the end of measure 24.

SOMMER NATTEN I TROMSØ

59

Side 2

Handwritten musical notation for the first system, measures 25-30. It consists of three staves labeled I, II, and III. Staff I contains a melodic line with notes circled and numbered 25 through 30. Staff II contains a bass line with chords G and D7. Staff III contains a bass line with notes and rests.

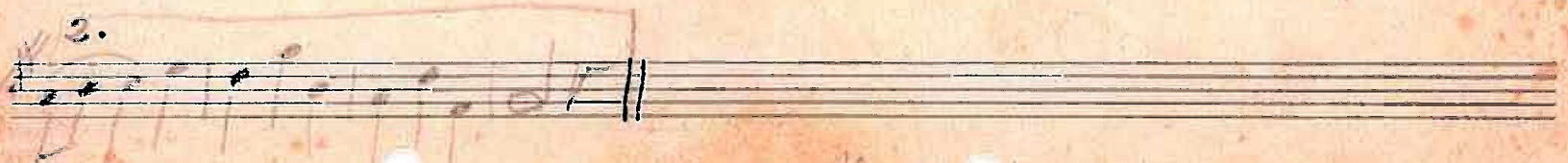
Handwritten musical notation for the second system, measures 31-36. It consists of three staves labeled I, II, and III. Staff I contains a melodic line with notes circled and numbered 31 through 36. Staff II contains a bass line with chords D7, G, and C(Ami). Staff III contains a bass line with notes and rests.

Handwritten musical notation for the third system, measures 37-40. It consists of three staves labeled I, II, and III. Staff I contains a melodic line with notes circled and numbered 37 through 40. Staff II contains a bass line with chords D7, G, D7, and G. Staff III contains a bass line with notes and rests. The system concludes with a double bar line and repeat dots.

A. M. Ludvigsen
14/2-85

1^{te} fl.

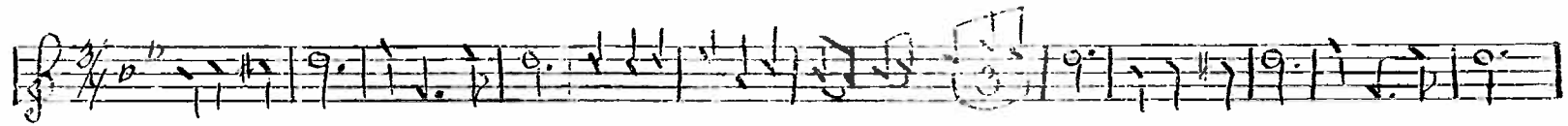
Als ein Sommerkinder träumt!



W. Müller für Erling Skjold

3
uden klaver

Immortal på rummet
Vals



... ..

... ..

A handwritten musical score consisting of approximately 14 staves. The notation includes various note values, rests, and dynamic markings such as 'p.' (piano). There are several annotations in the margins, including '1.' and '2.' above notes, and 'p.' below notes. The score is written in a cursive, handwritten style. The first staff begins with a treble clef and a key signature of one sharp (F#). The notation is dense and includes many slurs and ties. The overall appearance is that of a working draft or a composer's sketch.