

Til ein ven

Vals Peter L. Rypdal på 70-årsdagen 10. februar 1979.

Henry Vike

1. g. (Klar. solo)

2. g. (Klar. solo)

1. D.S. al Fine

Trio

Klarinett i A

Til ein ven

Vals Peter L. Rypdal på 70-årsdagen 19. Februar 1979.

Henry Vike

mf

f

mf

f

mf

Solo 16 takter

mf

mf

Trio

mf

mf

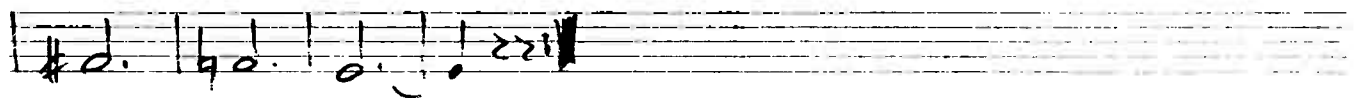
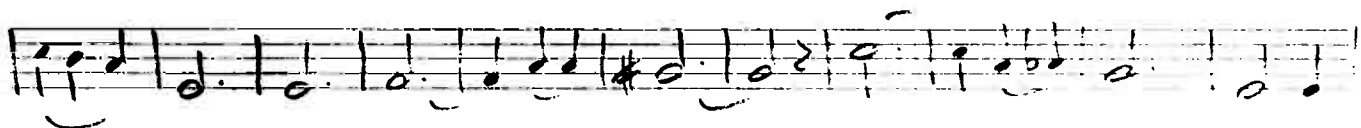
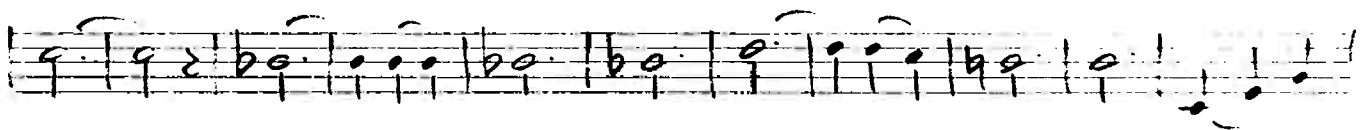
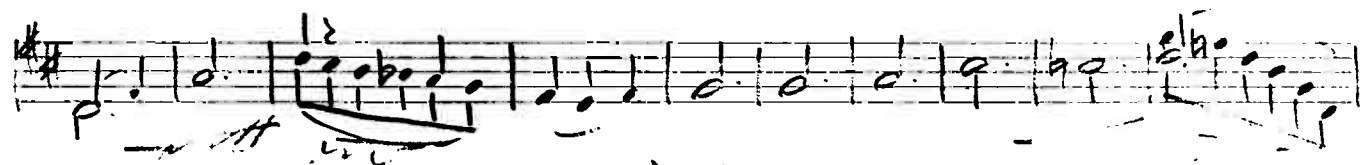
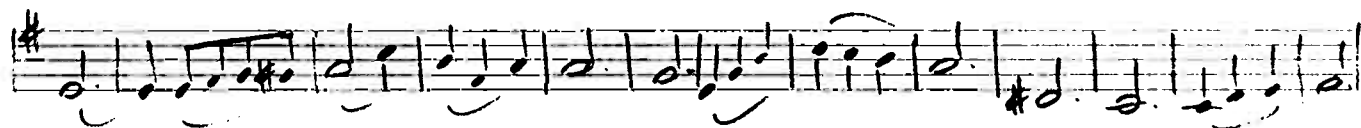
mf

Klavinettsst. C

(for fele)

Til ein ven

Henry like.



Til ein ven

Vals Peter L. Rypdal på 70-årsdagen 10. februar 1979. Henry Vike

Handwritten musical notation for the first system. The piece is in G major, 3/4 time, and 4/4 time. The right hand features a melodic line with grace notes and slurs, while the left hand provides a steady accompaniment. Chords G and D7 are indicated below the staff.

Handwritten musical notation for the second system. The right hand continues the melodic development with grace notes and slurs. The left hand accompaniment remains consistent. Chords am and D7 are indicated below the staff.

Handwritten musical notation for the third system. The right hand features a melodic line with grace notes and slurs. The left hand accompaniment continues. Chords G, em, H7, and am are indicated below the staff.

Handwritten musical notation for the fourth system. The right hand continues the melodic line with grace notes and slurs. The left hand accompaniment continues. Chords D7, G, G7, H7, em, and am are indicated below the staff.

Handwritten musical notation for the fifth system. The right hand continues the melodic line with grace notes and slurs. The left hand accompaniment continues. Chords D7, G, and D are indicated below the staff. The word "Fine" is written above the staff.

Handwritten musical notation for the sixth system. The right hand continues the melodic line with grace notes and slurs. The left hand accompaniment continues. Chords A7, +, D, A7, and D7 are indicated below the staff.

Handwritten musical notation for the first system of the Trio section. The piece is in G major, 3/4 time, and 4/4 time. The right hand features a melodic line with grace notes and slurs. The left hand provides a steady accompaniment. Chords G, A7, and D are indicated below the staff. The word "Trio" is written above the staff. The first ending is marked with "1." and the second ending with "2.". The word "D.S. al Fine" is written above the staff.

Handwritten musical notation for the second system of the Trio section. The right hand continues the melodic line with grace notes and slurs. The left hand accompaniment continues. Chords C and F are indicated below the staff.

Handwritten musical notation for the third system of the Trio section. The right hand continues the melodic line with grace notes and slurs. The left hand accompaniment continues. Chords Eb, D7, and # are indicated below the staff.

Handwritten musical notation for the fourth system of the Trio section. The right hand continues the melodic line with grace notes and slurs. The left hand accompaniment continues. Chords G, G7, C, and F are indicated below the staff.

Handwritten musical notation for the fifth system of the Trio section. The right hand continues the melodic line with grace notes and slurs. The left hand accompaniment continues. Chords F7, F, and C are indicated below the staff.

Handwritten musical notation for the sixth system of the Trio section. The right hand continues the melodic line with grace notes and slurs. The left hand accompaniment continues. Chords D, G7, and C are indicated below the staff.