

1ma Violin

Slide - Lenses - Val.

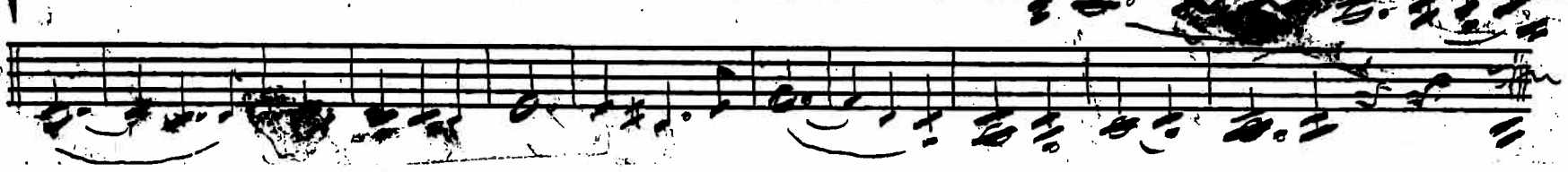
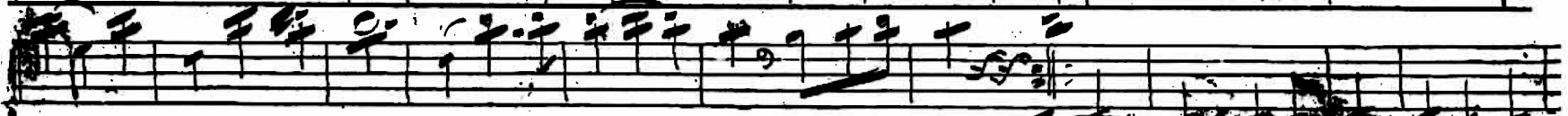


121

11

No. 20

Grade - Lancers - Vars.



Handwritten musical notation on a single staff. The notation includes a treble clef, a key signature of one sharp (F#), and a 4/4 time signature. The music consists of a sequence of notes and rests, with some notes beamed together. A handwritten '4' is written to the left of the staff.

Handwritten musical notation on a single staff. The notation includes a treble clef, a key signature of one sharp (F#), and a 4/4 time signature. The music consists of a sequence of notes and rests, with some notes beamed together. A double bar line is present at the end of the staff.

Handwritten musical notation on a single staff. The notation includes a treble clef, a key signature of one sharp (F#), and a 4/4 time signature. The music consists of a sequence of notes and rests, with some notes beamed together. A handwritten 'x' is written to the left of the staff.

Handwritten musical notation on a single staff. The notation includes a treble clef, a key signature of one sharp (F#), and a 4/4 time signature. The music consists of a sequence of notes and rests, with some notes beamed together. A double bar line is present at the end of the staff.

Handwritten musical notation on a single staff. The notation includes a treble clef, a key signature of one sharp (F#), and a 4/4 time signature. The music consists of a sequence of notes and rests, with some notes beamed together. A double bar line is present at the end of the staff.

Al. 2: B

Glorie Lenchers, Vau.

A handwritten musical score consisting of five staves. The first staff is in treble clef with a key signature of one sharp (F#) and a 2/4 time signature. It features a melodic line with many slurs and some accidentals. The second staff is also in treble clef with the same key signature and time signature, continuing the melodic line. The third staff is in bass clef with the same key signature and time signature, providing a harmonic accompaniment with chords and some melodic fragments. The fourth staff is in bass clef with the same key signature and time signature, continuing the accompaniment. The fifth staff is in bass clef with the same key signature and time signature, showing a more rhythmic accompaniment with slurs and some accidentals. The notation is dense and appears to be a working draft or a composer's sketch.

No. 39. Kl.

Ghile Gensus vals

